

DOUBLE CAVITY SLIDING DOORS.
FEATURE TIMBER FINISH AS
SELECTED BY TENANT
FRAME TYPE: ALUMINIUM
FINISH: CLEAR ANODISED

SOLID CORE INTERIOR
GRADE HINGED DOOR
FRAME TYPE: ALUMINIUM
FINISH: PAINT

D
01 D
02

D
03

DOOR SCHEDULE
T1.215 1:50



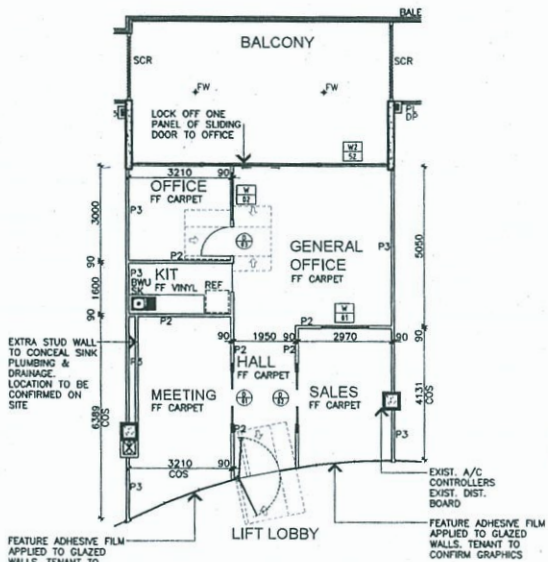
FIXED GLASS OFFICE
PARTITION SYSTEM
GLASS TYPE: CLEAR
GLASS TINT: NIL
FINISH: CLEAR ANODISED

FIXED GLASS OFFICE
PARTITION SYSTEM
GLASS TYPE: CLEAR
GLASS TINT: NIL
FINISH: CLEAR ANODISED

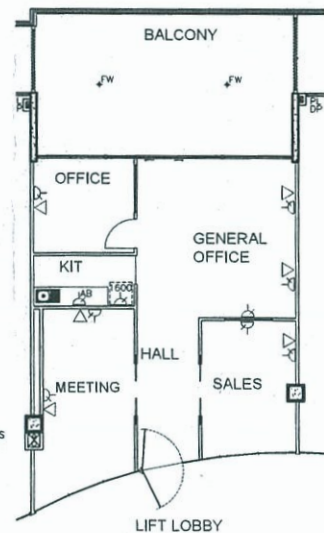
W
01

W
02

WINDOW SCHEDULE
T1.215 1:100



FLOOR PLAN
T1.215 1:100



ELECTRICAL PLAN
T1.215 1:100

T1.215