

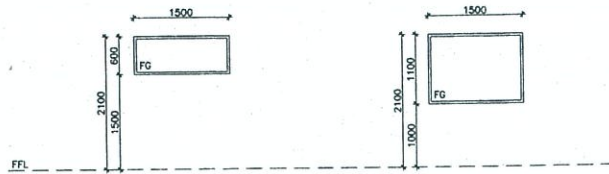
DOUBLE CAVITY SLIDING DOORS:
 FEATURE TIMBER FINISH AS
 SELECTED BY TENANT
 FRAME TYPE: ALUMINIUM
 FINISH: CLEAR ANODISED



SOLID CORE INTERIOR
 GRADE HINGED DOOR
 FRAME TYPE: ALUMINIUM
 FINISH: PAINT



DOOR SCHEDULE
 T1.215 1:50



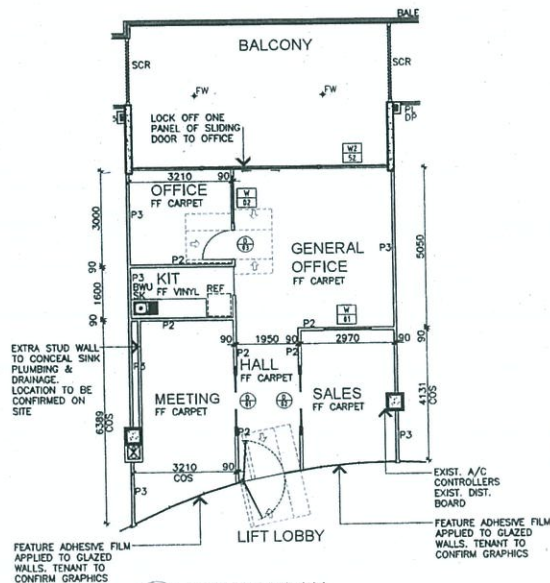
FIXED GLASS OFFICE
 PARTITION SYSTEM
 GLASS TYPE: CLEAR
 GLASS TINT: NIL
 FINISH: CLEAR ANODISED



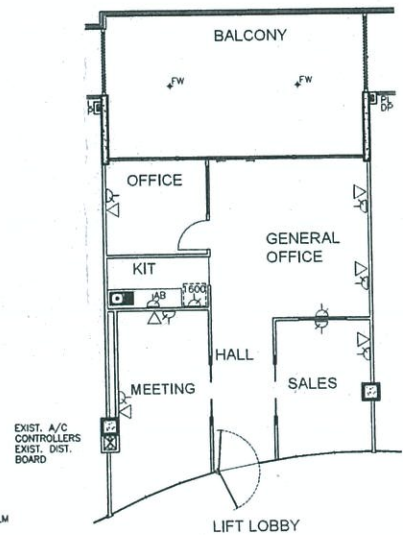
FIXED GLASS OFFICE
 PARTITION SYSTEM
 GLASS TYPE: CLEAR
 GLASS TINT: NIL
 FINISH: CLEAR ANODISED



WINDOW SCHEDULE
 T1.215 1:100



FLOOR PLAN
 T1.215 1:100



ELECTRICAL PLAN
 T1.215 1:100